

# Williamson County Art Guild

September/October, 2007, Volume 236

*Building Community Through Creativity*

## WCAG Gallery Chair STAR OF OPENING!!!



Sonia, our hard working Gallery Chair, also known as Sonia Marie Colonna-Mathis, was the featured artist at Framer's Gallery opening night on September 7th. Along with her many other skills, it is obvious that she is a highly skilled and trained artist. Her beautifully rendered "creatures" exhibit not only amazing creativity but some excellent drawing skills. Be sure you visit the gallery this month to see her work. Sonia's own account, tells us that she was always drawing, always looking to study and describe the world around her. With family encouragement, she took art classes all through school and in college received a BFA in studio art from the University of Texas, Austin. Sonia works comfortably in several mediums, oil, pastel, pencil/pen, marker and printmaking. "I like to focus on the details that give away the character of the subject...and I almost always find something amusing." Her subjects are primarily people and animals, though you may find an occasional still life. Sonia has shown in galleries in Austin and Georgetown, Texas. She currently resides in Georgetown with her husband Carlton, son Carson and daughter Luna. She has been picture framing since 1999 and currently works at Framer's Gallery in Georgetown where she has contributed to award winning designs for the the last 4 years. To those of us who know her, she is also a tireless worker for WCAG.

Congratulations Sonia, for a great show.



## AUSTIN'S WATERLOO WATERCOLOR SOCIETY SHOWING AT FRAMER'S GALLERY THE MONTH OF SEPTEMBER

For over 29 years, the Waterloo Watercolor Society has been in existence. The purpose is to promote the recognition of watercolor and all water-based media paintings. With over 150 members, there are two exhibitions a year, opportunities to take workshops from nationally recognized artists, monthly newsletters, a website for the latest up to date information, field trips to paint, trips to Mexico or Santa Fe region for painting opportunities, bus trips to museum exhibits, and the chance to show /sell in alternative spaces such as restaurants. And of course, the chance to interact with fellow artists. This show will have both paintings in transparent watercolor, and creations in acrylic on a paper base. Take a trip to the Gallery to see these exciting watercolors!



## August Board of Directors Meeting

The meeting was opened at 7PM with Fred discussing the need to raise the dues for membership. There was a discussion and the Board voted against raising the dues for now. Larry McCormick, questioned the validity of the Scholarship Fund stating that he felt the monies could be better spent on enriching the membership. Larry moved that the different funds held by WCAG be collapsed and moved into one general fund. The motion was passed and approved. Fred will bring this up at the next General meeting.

We discussed the issue of our membership dues being June to June. Fred and Susan O'Conner have discussed this as she is agreeable to prorating when people join for new members only. Larry suggested that on the membership for we list it correctly. For new members have a prorated schedule published and then dues will still run from June to June. Larry made the motion, Nancy seconded it and motion that was passed.

Char suggested that we find a way to benefit those who are allowing us to hang, eg. Franklin's Jewelers. The board agreed that we should give him a percentage of sales to encourage sales. The amount of 10% was discussed. Kathalee said it is difficult to handle the refreshments for more than one opening at a time. She also asked for guidelines on what to spend for the openings. Char will followup on policies for those hosting exhibits.

We discussed publicity and Nancy will put an ad in the local paper. The web site as of the date of this meeting had not changed, so Larry recommended that we have it pulled (NOTE: *since this meeting, the website is now up and running again with all the correct information.*)

We discussed the viability of a Clothline Art Show. More research is needed to accomplish this.

We discussed a juried art show. Fred said we could hold it at Framers Gallery. We decided to have a separate meeting to discuss this. Pat asked if we should have more workshops and fielded the questions, what kind, how long, teachers, etc. She stated that many people ask her about workshops.

*If people knew how hard I  
worked to get my mastery, it  
wouldn't seem so wonderful at all*

**Michelangelo**

**ART QUIZ:** What we are looking for here is the name of the artist, and "just what kind of art is this anyway?"



Last months winner was Vicky Mullins, You almost had it perfect Vicky..... it's Winslow Homer. The painting is titled "Breezing Up (A Fair Wind)" and hangs in the National Gallery of Art. it is one of Homer's most popular paintings. Breezing Up was first exhibited in 1876, the year of America's centenary celebration. Critics hailed the work for

its freshness and energy. Amid the general climate of optimism and great expectations for the future, some sensed an even larger meaning in the scene—one writer declared that "the skipper's young American son, gazing brightly off to the illimitable horizon [is a symbol of] our country's quiet valor, hearty cheer, and sublime ignorance of bad luck."



"Sunlight on the Coast" another by Winslow Homer, National Gallery of Art. For a complete biography of this famous American Artist, you can go online to [www.winslow-homer.org](http://www.winslow-homer.org) or many other web sites by just searching his name.

### **WCAG Webpage up and running**

*with just a few corrections yet to be made.*

*If you would like your art on the webpage, send all the information to [wcartguild@yahoo.com](mailto:wcartguild@yahoo.com). Include a bio, contact information, and any pictures should be .jpeg format, at least 200 dpi, sized close to 4x5 inches. Just no 20x18 inches please, they are much harder to work with. All recent newsletters can be downloaded from the web-site. Keep checking it out. [www.wcartguild.org](http://www.wcartguild.org) Thanks to ARISTEC, Rich Bartko*

## From the President

During our last board meeting we decided that the scholarship program was not fully meeting our commitment to the educational aspect of our guild. It has been nice to help out new collage students with their education but these new artists would go on with their plans if we helped them or not. The amount of awards we were giving did not even put a dent in their school budget. Yes, it was an honor to win but that's about all. When we were talking about this, only one of the three winners had their school send us a transcript. What we needed was to come up with programs that would get young artists to the point of going on to a higher level of art education, to introduce art to youngsters. The schools have just about ceased doing this. So the board decided to investigate this, talk to the schools to see how we can help and come up with a new plan. We then made this recommendation to the general membership at our last meeting and it passed with only two negative votes. We also feel that there is a large need for more education within our own membership, a need for mini workshops done by some of our presenters at our meetings. We probably would subsidize these. All in all, we would be investing more funds into education but it would give a far better result for all in the arts.

We also have started plans for more exhibits and a juried art show in the spring. This is going to take an increase in the level of work for everyone. The board is willing to start the plans for these projects but it will take YOU to implement them. Now I don't care if you participate in this or not but I guarantee you, from past experience, that if you let it all up to the board members to do everything, you will be faced with finding a whole new board next May. It's called burn-out. Let's don't let that happen!

Fred

Creativity is being able to take facts, fiction and feelings, and turn them into a metaphor. All art is a metaphor.

*Robert Burridge*

## CALENDAR OF EVENTS

**September 28th, Friday** Pick up art, **Franklin's Jewelers**

Between 1PM and 3PM

**September 30th, Sunday**, **Paint in the Park**, meet at the Gazebo, San Gabriel Park for a Sunday afternoon paint-out. 1PM. For more information contact Kathalee @wcholmans@msn.com 512.863.2479

**September 29th, Saturday**, Deliver paintings to **Franklin's Jewelers**. Between 10AM and 1PM.

**October 1, Monday** Hanging art at **Franklin's** (if you are hanging in this show, please contact Char regarding helping her with this exhibit) 512.863.7739

**October 2nd, Tuesday**, **General Meeting** at Windberg Art Center. Social at 6:30, meeting 7PM. Program will be Don Stackhouse, "Mixed Media on Yupo"

**October 3 & 4th**, **Framers Gallery**, pick-up for the September show and drop-off for October show. 9AM to 12:30 PM.

**October 5th, Friday**, **Framer's Gallery, Franklin's Jewelers**, First Friday. Remember to attend if you have art in either place. Contact Kathalee regarding refreshments



**Sonia  
Colonia-  
Mathis**

**Self  
Portrait**

Because I need a bit of humor in my life while putting this Newsletter together, I'm starting a new section called..

Massacred Methaphors. BEWARE!

MASSACRED METAPHOR 1

*"She grew on him like she was a colony of E. coli and he was room-temperture British beef"*

## From Show/Exhibits Chair

---

Franklin Jewelers : Pick up your art on Friday, Sept 28<sup>th</sup>

Rehanging on October 1<sup>st</sup>

This show will hang until November 12<sup>th</sup>

New show for Christmas will hang on November 15<sup>th</sup>

Poppy Café @ Library is interested in 2-3 pieces in keeping with her setting . First come first serve. Those who are hanging should pick up what is there. See Lisa directly

Artists: please appear at Franklin's on 1<sup>st</sup> Friday if you have art hanging there. I need a committee of 6 to 8 people that I can rotate between shows, and who can help me work out a consistent exhibit policy that we can apply to any and all exhibit locations.

Franklin's Jeweler's would like to have an ongoing exhibit, but he can't commit his time to setting up and taking down, so we need a committee of 6-8 people who can take turns assisting in the taking down, preparing and hanging at each exhibit change. The board voted at the last board meeting that we will pay a 10% fee from each sale to the exhibitor, in the hope that this may create an incentive to host exhibits and perhaps encourage sales.

The current show will be taken down on September 28<sup>th</sup>, and you need to pick up your art between 1 and 3pm on that date. New art for Franklin's should be delivered on September 29<sup>th</sup> between 10am and 1pm at Franklin's Jewelry Store. This show will go up on October 1<sup>st</sup>. I need someone (1 person) to take in the art, someone (1 person) to get release forms signed, someone to help lay out the show and hang it (2 persons), and someone to make labels (1 person). I would like to have 6 – 8 names that I can call on for each show. We also need help planning, preparing and serving refreshments.

### Next dates to note are:

- October Show at Franklin's will be taken down on November 12<sup>th</sup>, and you should pick up your pieces 1pm and 3pm on that date.
- We will take in for the Holiday Exhibit on November 13<sup>th</sup>.
- I would like to have an Opening Night on Friday November 15<sup>th</sup> with as many artists as possible participating, possibly a dress-up affair, if everyone is up for that.
- This show should stay up until December 28<sup>th</sup>.
- Bring in Art for January's show on *January 2<sup>nd</sup>*
- We will hang on January 3d and be ready for *First Friday* on *January 4th*

A lot depends on how much participation we get, both in terms of art to exhibit, and in terms of people helping to put it up. I think we have a very good venue at Franklin's Jewelers, and when the economy picks up, he will get a lot of traffic, but we also will need to make sure that the wall looks good all the time, otherwise he will have no incentive to keep us there.

*Char*

---

## WCAG GALLERY NEWS

---

Wow...we really packed the gallery this month! Thanks everyone! Exhibitors this month are:

Gene Inman - acrylics, Betty Lemley - acrylics and multi-media, Linda Figg - graphite and prismacolor, Luisa-Maria Potter - watercolor, Carol Nunnally - oil, David Jacobson - acrylics, Mary Beth Martin - pastels, Patricia Feille - watercolor and collage, Nancy Brown - oil, Charleen Rogers - acrylics, Gwen Dennis - collage, Joy Morrison - oil and Kathalee Holmans - multi-media.

Pick up for the September show and drop off for the October show will be October 3rd and 4th, 9am to 12:30pm. Remember...you can sign up now for October and November spaces...December's theme will be miniatures...Great job everybody!



Nancy Brown

Oil

*Sonia*

## Art Classes, Workshops & Shows to Enter

1. **The Art Center of Williamson County** is located in Round Rock at 601 Great Oaks Blvd. The Art Center provides a variety of art classes and workshops. For more information contact Mticheal at 512-248-8690 or go to the website. [www.artcenterwc.com](http://www.artcenterwc.com) .

2. **Diana Kipfer:** Fall Art and Jewelry Classes Begin Soon. Sweet Liberty Creations is ready to help turn all those wonderful summer inspirations into a work of art. There are plenty of opportunities to explore a new painting subjects and get back into a favorite creative outlet. Check out all the fun classes: <http://www.sweetlibertycreations.com/SLCClasses.html>

4. **Patricia Lyle** "Paint in Patricia's Studio: Private lessons by appointment, Tuesdays and Wednesdays. (Call 512-671-6805 for information and reservations. Her web page [www.PatriciaLyle.com](http://www.PatriciaLyle.com)

5. **The Sun City Visual Arts Club** (VAC) invites the WCAG members to participate in our art classes held throughout the year at our studio at 1 Texas Drive in Sun City. For more information Contact Merijane at 512.863.0951 or via e-mail [merijanec@aol.com](mailto:merijanec@aol.com)

6. **Windberg Art Center**, workshops and weekly classes held in their beautiful facility. For information on up-coming workshops and classes, please visit their website, [www.windbergartcenter.com](http://www.windbergartcenter.com)

7. **Nancy Brown, Designing Watercolors**, Beginning and Intermediate Watercolor classes. Classes will be at her home studio on October 15th and 16th. for more information contact Nancy at 869-7790

## From Pat Langley Program Chair

We are excited to have Sue Gray offering a 1 day workshop, "**Color Your World**". This one day workshop is all about color, color mixing, color harmony in you art. It will be at the Windberg Art Center on Saturday, November 10th. from 9A.M. until 4P.M. The cost is \$65.00 for the full day and a box lunch will be provided. If you are interested please e-mail Pat Langley as soon as possible to reserve your place. [wholang@verizon.net](mailto:wholang@verizon.net)

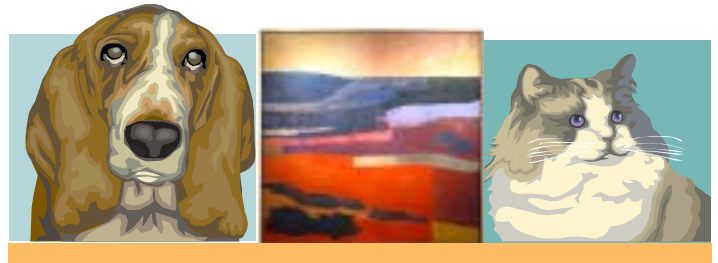
*Pat*

## ART FOR ANIMALS 2007 A CHOCOLATE AFFAIR

Tickets now on sale for Art for Animals 2007 – A Chocolate Affair. Get your tickets at Framers's Gallery or at the Georgetown Animal Shelter (110 W L Walden Dr, Georgetown). Tickets are \$10 each (or 2 tickets for \$15.00).

Art for Animals 2007 – A Chocolate Affair will be held on September 30, 2007 starting at 2pm. The event will be held in the Community Center in San Gabriel Park. The day will begin with wonderful desserts and coffee along with a concert by a Quartet from Southwestern University. While enjoying the concert people can be bidding on the numerous silent auction items. Besides artwork we also have many gift certificates to restaurants, theatre tickets, spas, etc. The live auction will begin about 3pm.

Come out to support the Animal Shelter and at the same time take home some wonderful treasures! Tickets will also be available at the door.



## Volunteer Help Needed at the JUVENILE JUSTICE CENTER

The new school year is approaching and with it the need for artist volunteers for the Williamson County Juvenile Justice Center. We usually have a meeting in September with the Principal Linda Taylor to set up the school year schedule for art classes. It takes some time to qualify a new instructor (County paperwork etc.), so those interested should contact Chuck Roush or Allison Bennett (current volunteers). The teaching environment really is ideal. No discipline problems at all in the class room. The Justice staff in the class room takes care of any problems. The subject or project are left up to the art instructors. Of course safety and content suitable for ages 12 to 17. Projects should be able to complete in a 40 minute class period. In past years ( with sufficient volunteers) the art classes are held once a week. With fewer volunteers we had to cut it down to twice a month. The students really enjoy and look forward to the classes.

Chuck Roush email:[cr.art@verizon.net](mailto:cr.art@verizon.net) Phone: 512-863-4218

Allison Bennett email: [alliebennett@gmail.com](mailto:alliebennett@gmail.com)

## GENERAL MEMBERSHIP MEETING, 9/4

Despite the rain we again had a good crowd for the WCAG meeting.

Fred opened the meeting at 7:00 and told a little about what we talked about at the board meeting. He told everyone we had discussed raising dues and decided against it at this time.

Fred talked about some issues with the scholarship fund, how our monies could be better spent. and a motion was entertained to move the scholarship fund monies to the general fund and use the monies in other ways to help promote the arts in the community. The motion was entertained, seconded and passed with only two votes against.

Fred said that we would like to have a juried art show in May. He then ask for those interested in heading it up to contact him. He said it would involve photography and 2 dimensional arts. 100% of entry fee money will go toward the prizes. Fees-1 for \$20; 2 for \$25; 3 for \$30; each additional for \$10 ea. JPEG files only, no slides, no photos.

Linda Stinnett won the raffle which was a year subscription to The American Artist. The \$ raised from the raffle also goes into our "education" fund.

Diana E. introduced Barbara Savage and said that she wanted to open her home and her studio to WCAG on Oct. 20<sup>th</sup>. I'm sure Diana will tell us more in the future.

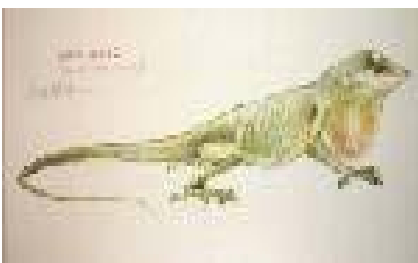
Our very informative program was presented by Artist Jane Paden. She brought many of her lovely paintings done with casein on various papers so we could see the effect on each. Did you know that casein paintings have been found in the caves and are over 9000 years old??

Our Oct. meeting will be Oct. 2<sup>nd</sup>. We are privileged to have Don Stackhouse to do our program. He will talk about and probably demonstrate "mixed media on yupo"

### Pat and Char

Thanks to both Pat and Char for providing the above information. WCAG still needs a secretary.

So....are you actually a real dragon?



## The study of COLOR can get very technical.

I remember how amazed I was visiting the VLA, or the National Radio Astronomy Observatory near Socorro, NM. I used to drive that road often visiting my son in NM. I was amazed to discover that all of those giant, and I mean giant, disks (antennas to them), were detecting wavelengths from far away galaxies and, most amazing of all, the scientists were able to decipher what elements were out there by reading the COLOR of the wavelengths. If you ever have a chance to visit that place, do it.

Fortunately for us, COLOR is more basic. COLOR is one of the most expressive elements in art because its quality effects our emotions directly. Have you ever created an artwork that made you sick to your stomach...gave you that funny uneasy feeling and you couldn't figure out what was the matter? Chances are, your color was off. Many contemporary painters do that deliberately to upset the viewer. But if you don't want that tension in your work, you need to learn the basics. For you as an artist, the basics have to become habit.

COLOR begins with light. No light, no COLOR. Every ray of light coming from the sun is composed of waves that vibrate at different speeds. The sensation of COLOR, and here is where our work begins, is aroused in the mind by the way our sense of vision responds to the different wavelengths. In prisms, rainbows and other related experiments, we can see this narrow band called a spectrum. The colors in the spectrum are violet, blue-violet, blue, green, yellow, orange and red. Red has the longest wavelength. Think about how RED affects you. Think about how you react to a painting that has lots of RED in it. Think about how every COLOR affects you and remember when you pull those pigments out of your paint box, ready to apply them to your canvas or whatever, that you are working with more than a flower, a horse or a barn.

So, here are some questions:

What are the primary colors: the secondary colors: the triadic color system: neutrals: hue:intensity: complementary colors: intermediate colors: tints: shade: warm colors: cool colors: monochromatic colors: and analogous colors???? Can you mix 50 greens without using any of the green paints in your arsenal? Answers coming next month.

### AUGUST/SEPTEMBER TREASURERS REPORT

Checking	\$3218.72	
Building	\$2574.61	
Scholarship	\$4063.41	
<b>Scholarship</b>		
Income	\$95.30	
Expenses		\$750.00 (awarded)
<b>Checking</b>		
Income	\$375.00	
Expenses		\$565.40

## Williamson County Art Guild Membership Application

**ANNUAL DUES** are payable on or before June 1, the beginning of the WCAG fiscal year. Cash or check payments: no credit cards, please.

MEMBERSHIP MEETINGS are held the first Tuesday of each month at various locations in and around Georgetown. Please check the current newsletter or call The Framer's Gallery for the location of upcoming meetings.

Benefits of membership include newsletters, monthly general activity meetings, opportunity to hang work in WCAG Gallery, opportunity to participate in WCAG led community art shows and social functions, ability to join with WCAG artists in numerous networking situations and meet some outstanding people.

To join, please complete the application below and return with payment to:  
Williamson County Art Guild, P. O. Box 1158 Georgetown, TX 78627

### WILLIAMSON COUNTY ART GUILD *Membership Application*

*Please Print*

Name \_\_\_\_\_

Company \_\_\_\_\_

Address \_\_\_\_\_

City \_\_\_\_\_ State \_\_\_\_\_ Zip \_\_\_\_\_

Phone \_\_\_\_\_ Cel \_\_\_\_\_

Email \_\_\_\_\_

Website Address \_\_\_\_\_

Birthday (optional) \_\_\_\_\_ Today's Date \_\_\_\_\_

AMOUNT \_\_\_\_\_ How Paid \_\_\_\_\_ Ck # \_\_\_\_\_

*Select Membership Category*

Individual \$30 \_\_\_\_\_

Family \$35 \_\_\_\_\_

Student \$18 \_\_\_\_\_

Senior \$20 \_\_\_\_\_

Sponsor \$50 to \$250 \_\_\_\_\_

Sustaining \$250 \_\_\_\_\_

NEW MEMBER \_\_\_\_\_

Renewal \_\_\_\_\_

Member Since \_\_\_\_\_

*WELCOME  
NEW MEMBERS*

*Carrie Ann Barton-Smith, Floyd Riley*

## **BOARD OF DIRECTORS**

**President** - Fred Bolgen

512-633-0868 / fredbolgen@suddenlink.net

**Exhibits Chair** - Johnny Parsons

512-508-2272 feelgood8604@hotmail.com

**Gallery Chair** - Sonia Mathis

512-497-3035 soniamarie.cm@netzero.com

**Hospitality Chair** - Kathalee Holmans

512-863-2479 - wcholmans@msn.com

**Membership Chair** - Susan OConnor

512-869-0968 suberdoo@hotmail.com

**Newsletter Chair** – Sue Gray

512-238-0955 / wcartguild@yahoo.com

**Parliamentarian** - Larry McCormick

512-869-0939 - mccor@suddenlink.net

**Program Chair** - Pat Langley

512-864-9981 wholang@verizon.net

**Publicity Chair**- Nancy Brown

512-869-7790 nanbrown55@aol.com

**WELCOMENANCY!**

**Secretary** - **open...open....open..**

**Show Chair** – Charlotte Sylvest

512-863-7739 grisling2@verizon.net

**Treasurer** - Linda Stinnett

512-863-7949 craftdreams1@suddenlink.net

## **JOIN THE ART GUILD**

You are invited to join the Art Guild by dropping in at the Framer's Gallery on the square or by sending a membership form & check to:

**Williamson County Art Guild,  
P.O. Box 1158  
Georgetown, TX 78627**

### Membership Fees

Individual	\$30
Student	\$18
Senior	\$20
Family	\$35
Sponsor	\$50-\$250
Sustaining Mbr	\$250

We welcome new members. Copies of the membership form are available at the Framer's Gallery and online at [www.wcartguild.org](http://www.wcartguild.org).

Contact membership chair Susan O'Connor for more information about joining. [suberdoo@hotmail.com](mailto:suberdoo@hotmail.com)

**WCARTGUILD@YAHOO.COM**

## **Submissions to Newsletter**

We welcome items for the newsletter. If you have any helpful advice or bits of information about the arts community, or artwork in general, please contact Newsletter Chair Sue Gray at 512-238-0955 or email to:

[wcartguild@yahoo.com](mailto:wcartguild@yahoo.com)

Again, please consider signing up for the e-newsletter as it saves the Guild a lot of money through the year on postage and printing costs and a great deal of volunteer time. If you haven't already signed up please send a note to Sue Gray at

[wcartguild@yahoo.com](mailto:wcartguild@yahoo.com)

We can also help you with any problems you are having downloading the letter.

*DEADLINE: 10th of the month via e-mail for the following month. Any items not received by that date will go in the next month's newsletter. Please send pictures in .jpg format.*

The Williamson County Art Guild is a non-profit 501c (3) organization, organized & operated for educational and charitable purposes. Its specific focus is to stimulate interest in art in Williamson County through art in exhibits, artists' programs and sponsorship of scholarships and workshops.

## **Williamson County Art Guild**

P. O. Box 1158  
Georgetown TX 78627  
512-863-2214

